



CAFÉ DE ORIENTE  
BISTRÓ&RESTAURANTE



*Restaurant  
& Venues*

# Restaurant & Rooms



Under the vaults that once belonged to the seventeenth-century Convent of San Gil is the restaurant of the **Café de Oriente** with different rooms appropriate for each occasion such as family reunions, with friends or professional meetings. Café de Oriente has enough capacity to offer all kinds of events

Its **gastronomic** proposal, the tradition of the stove and even the avant-garde of our days based on products from and with the signature of chef Roberto Hierro.



*Plaza de Oriente 2* 28013 – Madrid

# *Restaurant & Rooms*

---

- Sal3n de la Abuela
- Sal3n San Gil
- Sal3n del Rey
- Sala Blanca
- Sala Chinch3n
- Rinc3n Mingote
- Semi-Private Bistro
- Terrace
- Caf3 de Oriente in EXCLUSIVITY







# *Salón de la Abuela*

---

The SALON ABUELA is the brightest, with views of the Royal Palace.

## Capabilities

Imperial Table: Maximum 26 people (total maximum 28)

Guaranteed minimum 15 adult menus

*\*This space has a private bathroom as well as a separate entrance.*

*\*As always, we do not charge rent for the rooms, we only ask for the minimum number of diners required by each room or equivalent consumption. In the case of SALON ABUELA, it is €1,000 + VAT*









# Salón San Gil

---

The SALON SAN GIL owes its name to the Convent of San Gil, a site that in the seventeenth century was a convent of monks, and where the Café de Oriente is currently located. This room is the largest.

## Capabilities

Rectangular tables between 8-10 people

Maximum 64 people (72 maximum)

*\*If combined with the small private rooms in the same floor, we would have a maximum capacity of 86 people*

Minimum guaranteed: 40 menus

*\*Salón is located in a seventeenth-century cave.*

*\*You have to go down stairs.*

*\*As always, **we do not charge rent for the rooms**, we only request the minimum number of diners required by each room or equivalent consumption. In the case of the San Gil Room, it is €2,800 + VAT*







# *Salón del Rey*

---

The King's Room has a round glass table for eight people, supported by an inverted capital as a foot.

## *Capabilities:*

Guaranteed minimum: 4 people

Recommended maximum: 8 people (maximum 10)

\*Salón is located in a seventeenth-century cave.

\*You have to go downstairs.

\*As always, **we do not charge rents for the rooms**, we only request the minimum number of diners required by each room or equivalent consumption





# *Sala Blanca*

---

The White Room downstairs the original rooms of the 17th-century convent of San Gil, whose walls are made of brick, in the lower part of the café. At present this room, along with the others, was in the basement; however, the original convent was located at the same level as the Plaza de Oriente.

## *Capabilities*

Guaranteed minimum: 4 people

Recommended maximum: 8 people (maximum 10)

*\*Salón is located in a seventeenth-century cave.*

*\*You have to go downstairs.*

*\*As always, we do not charge rents for the rooms, we only request the minimum number of diners required by each room or equivalent consumption*





# *Sala Chinchón*

---

The **Chinchón Room** downstairs original rooms of the San Gil confines from the seventeenth century, whose walls are made of brick, in the lower part of the café. At present this room, along with the others, was in the basement; however, the original convent was located at the same level as the Plaza de Oriente.

## *Capabilities*

Guaranteed minimum: 4 people

Recommended maximum: 6 people (maximum 7)

*\*Salón is located in a seventeenth-century cave.*

*\*You have to go downstairs.*







# *Bistró – Main Floor*

---

Magnificent living room on the main floor of the Café de Oriente, with large windows overlooking the Plaza de Oriente and the Royal Palace.

## *Capabilities:*

Maximum seating: 70 people

Maximum cocktail: 120 people

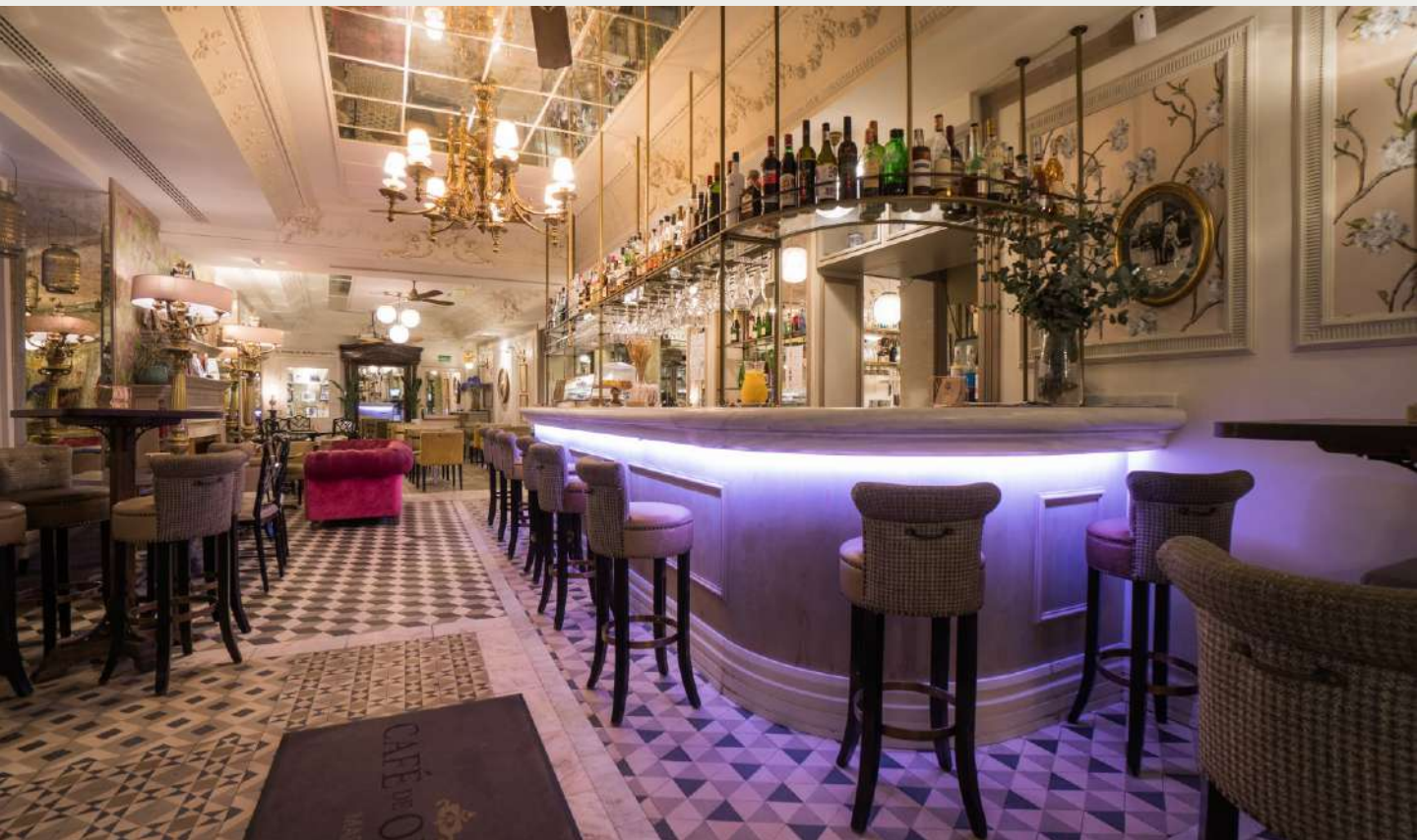
Maximum Open Bar: 120 people

*\*To have this option, the Café de Oriente must be closed exclusively. For more information, please contact our sales representative..*



# *Bistró – Main Floor*

---



# *Bistró – Rincón Mingote*

---

The **Mingote Corner** is located on the main floor – Bistro, a semi-private corner with views of the Royal Palace and Plaza de Oriente

## *Capabilities:*

Maximum seating 1 table: 16 people

Maximum 2 tables: 24 people

Set-up Deluxe table maximum 14 people (ask for price)

*\*As always, we do not charge rent for the rooms, we only ask for the minimum number of diners required by each room or equivalent consumption. In the case of Rincón Mingote it is 1,500€ + VAT*







EL RINCÓN DE ANTONIO MINGOTE

# *Bistró – SemiPrivado*

---

The Semi-Private is located on the main floor – Bistro, a semi-private corner with two large windows overlooking the Royal Palace and Plaza de Oriente

## *Capabilities:*

Maximum seating 3 tables: 32 people (maximum 34)

Maximum 2 tables: 24 people (minimum booking)

Maximum cocktail or welcome drink: 45 people

*\*As always, we do not charge rent for the rooms, we only request the minimum number of diners required by each room or equivalent consumption. In the case of Semi Privado it is €1,800 + VAT*







# Terrace – Café de Oriente

---

This wonderful terrace is located in the Plaza de Oriente, where you will enjoy its great atmosphere and views of the Royal Palace and Theatre

## *Capabilities:*

Maximum seating: 130 people

Maximum cocktail 150 people

*\*To be located on the terrace of the restaurant, there would be a supplement of 15€ + VAT (per person)*

*\*As always, **we do not charge rent for the rooms**, we only request the minimum number of diners required by each room or equivalent consumption. Check prices at the retailer*





# *Terrace – Café de Oriente*

---



# *Restaurant & Rooms*

---

## *Salón de la Abuela*

Seated minimum 15 PAX

Seated maximum 28/30 PAX

## *Salón San Gil*

Minimum seated 40 PAX

Maximum seated 64/68 PAX

## *Salón del Rey*

Seated 8/10 PAX

## *Sala Blanca*

Seated 8/10 PAX

## *Sala Chinchón*

Seated 6/7 PAX

## *Terraza*

Seated 130 PAX



# *Restaurant & Rooms*

---

## *Bistro – Planta Principal*

Seated maximum 70 PAX  
Cocktail or Oper Bar 120 PAX

## *Bistró – Rincón Mingote*

Seated minimum 16 PAX  
Seated maximum 24 PAX

## *Bistro - SemiPrivado*

Seated minimum 24 PAX  
Maximum seated 34 PAX  
Maximum cocktail 45 PAX



# *Restaurant & Rooms*

---

## *Cafe de Oriente - EXCLUSIVITY*

Seated maximum 170 PAX  
Maximum cocktail 200 PAX

### *Season January – April & August*

Minimum consumption 1/2 day – €10,000 + VAT  
Minimum full-time consumption – €18,000 + VAT

### *Season: May to July and September to December*

Minimum consumption 1/2 day – €16,000 + VAT  
Minimum full-time consumption – €24,000 + VAT

\*Although for this type of event it is better to consult the salesperson





**CAFÉ DE ORIENTE**  
Bistró&Restaurante

## *Contact*

Javier Regato Díaz

Tlf + 34 915 48 46 20 / M: 626 085 930

[jregato@alabarderocatering.es](mailto:jregato@alabarderocatering.es)

[www-cafedeoriente.es](http://www-cafedeoriente.es)

## *Address*

Plaza de Oriente 2, 28013 - Madrid

